

INSTALL AND USE NETOP VISION IN A REMOTE DESKTOP SERVICES ENVIRONMENT

NETOP® Vision™ Classroom Management Software

From the October 2013 release, Netop Vision supports Microsoft Remote Desktop Services (formerly known as Terminal Services) environments.

This means that the Vision student module can be installed and run on a central server and then be accessed by multiple students from almost any device that they use to connect to the server.

Netop Vision runs on the following server versions:

- Windows Server 2008 R2 with Remote Desktop Services
- Windows Server 2012 RC with Remote Desktop Services

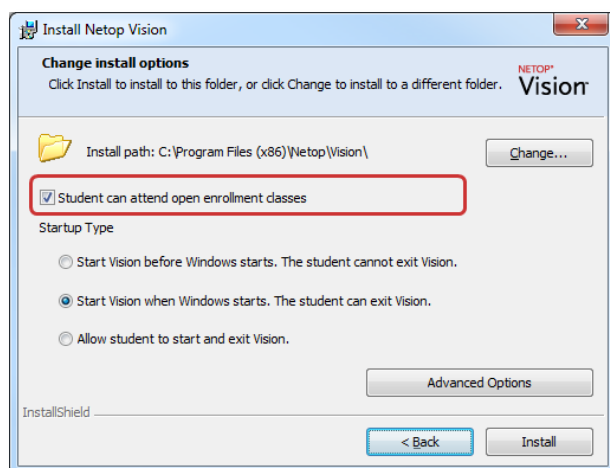
The Vision student module can be installed and run from the server.

The maximum number of simultaneously active instances of the student module is defined by hardware capabilities.

Install the Vision student module on the server

Installing Vision on the Windows Server requires Administrator privileges.

1. On the Windows Server, install the Vision student module. For details on the installation process, see the [Netop Vision Quick Installation Guide](#).
2. During the installation process, select the **Student can attend open enrollment classes** checkbox:

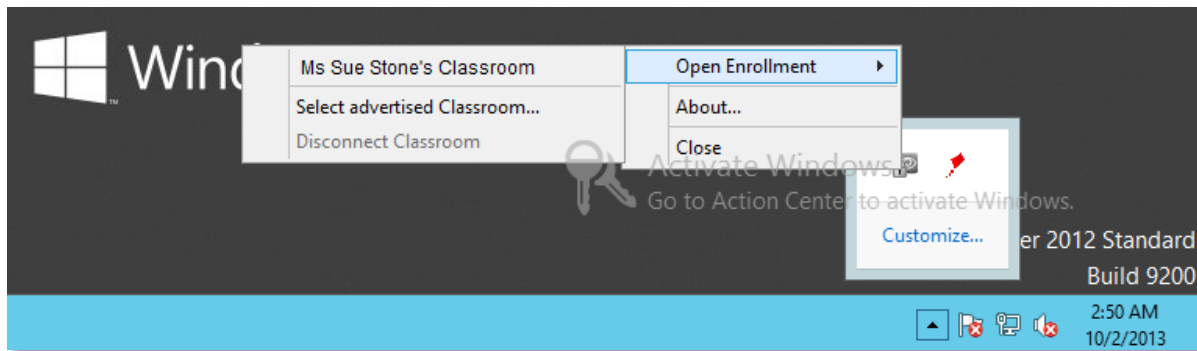


Give students access to Vision

To access the software on the server, students need a remote desktop connection viewer or tool.

- For students using a Windows computer this could be the **Remote Desktop Connection** which is included as part of the operating system.
- For students using a Mac computer this could be **Remote Desktop Connection for Mac**.
- For students using tablets a number of Remote Desktop Connection apps are available from App Store and Play Store respectively

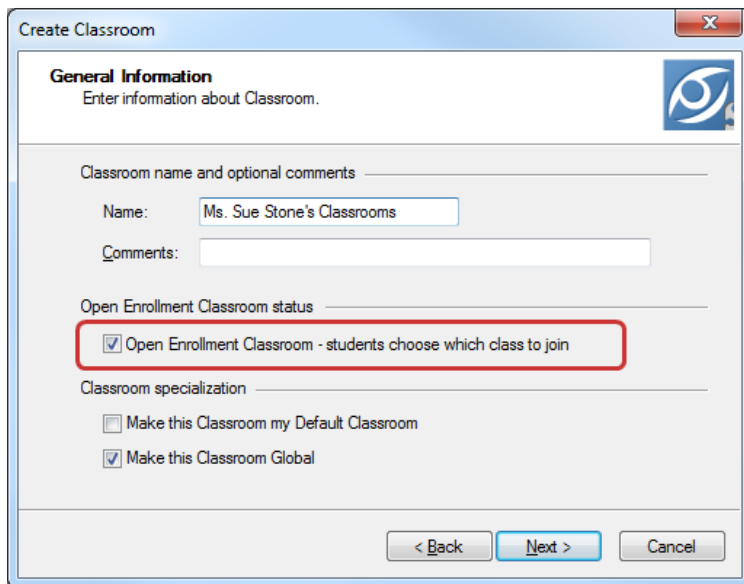
Once they have access to the remote desktop students can join a class that a teacher has already started from the open enrollment menu:



Have teachers create and start a class

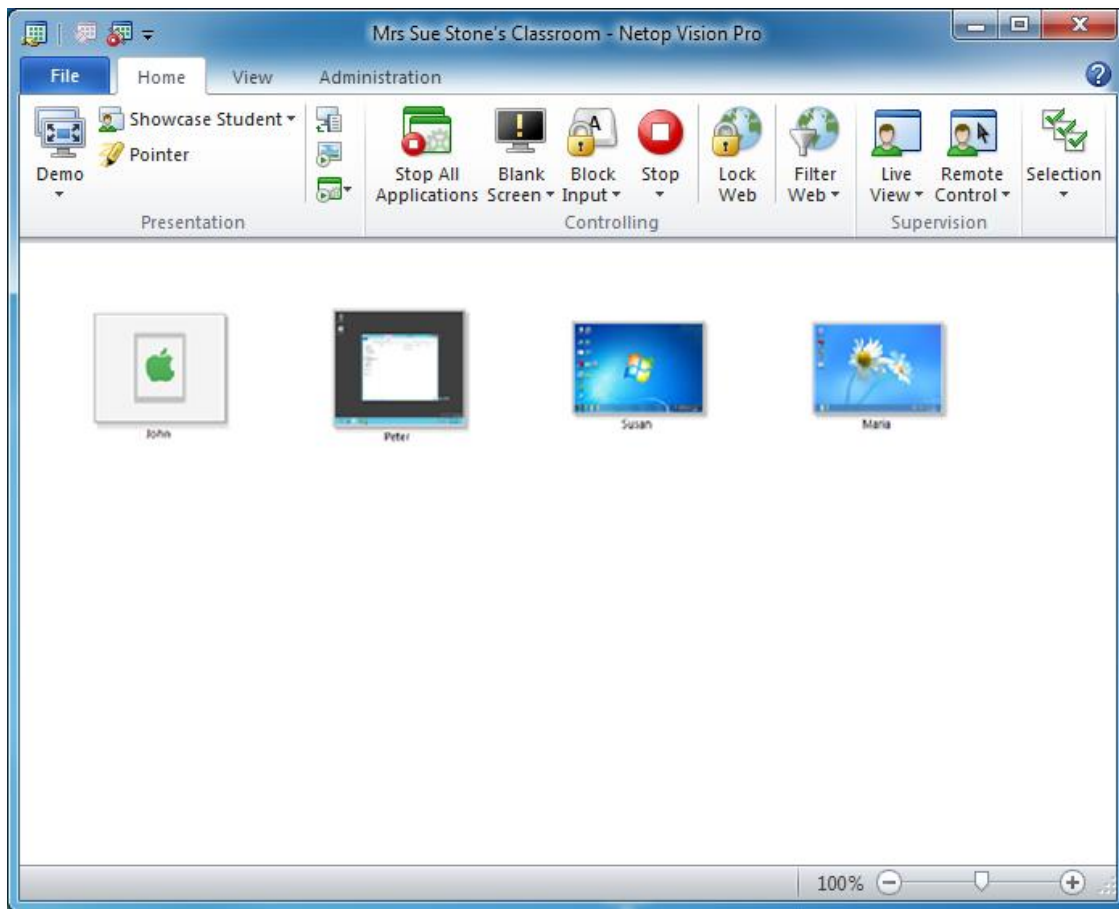
The Netop Vision teacher module must be installed on computer running Windows 8, Windows 7, Vista or XP Professional.

The classroom must be defined as an **Open Enrollment Classroom**:



This means that students are presented with a list of available classrooms and they choose which one to join.

Students joining from a remote desktop can be mixed with students joining from other types of devices; below screenshot shows students joining from the Vision Student iPad app, from a Windows Server, from a Windows 7 computer and from a Windows 8 computer.



The functionality for teacher-student interaction when a student joins from a server is the same as for student joining from a Windows desktop or laptop; however, please see below notice.

Functionality limitations for students on Windows Server 2012

Teachers will experience limited functionality for students running the Vision student module from a Windows Server 2012: student keyboard and mouse cannot be blocked. This impacts the following Vision features:

- Demo in full screen: demo runs in full screen but students have full use of keyboard and mouse.
- Blank Screen: the blank screen image or text displays but students have full use of keyboard and mouse.
- Block Input: students have full use of keyboard and mouse.
- Remote Control: teacher cannot take control of students' keyboard and mouse.

These limitations will be removed in future releases.