



**NETOP®**  
**Vision™**  
Classroom Management Software

Release Notes

**Product version:**

Vision and Vision Pro version 8.0

**Build number:**

8035

**Shipping date:**

April 22, 2013

## Release theme

This release introduces the first version of an entirely new way for students to connect to a Vision or Vision Pro classroom: a browser-based student module!

The browser-based student module requires no installation and can be run from any web enabled device - Windows computer, Mac computer, tablet or smartphone - that has a browser and a network connection.

The first version of the browser-based student can join an existing open enrollment class and can receive a demo that the teacher is running from their Vision teacher computer; additional features are planned for subsequent releases.

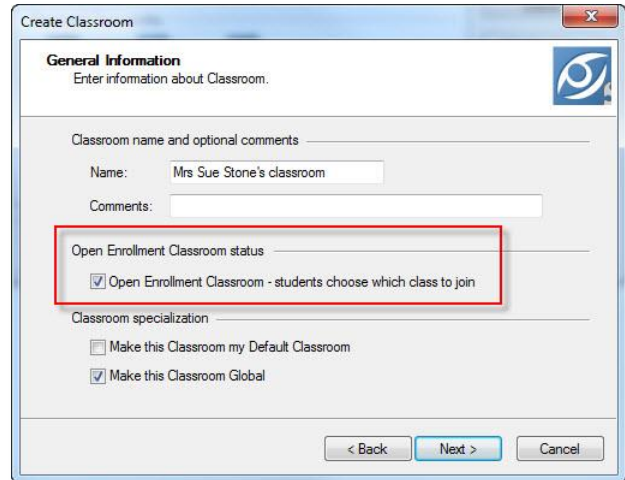
Along with Vision 8.0 we are also releasing an improved version of Vision@Hand. Vision@Hand is a teacher's companion to Vision that enables the teacher to blank student screens, showcase a student's screen and lock web access from any device that can connect to the Vision teacher computer, for example a tablet or a smartphone. Vision@Hand now also displays thumbnails of student computer screens. Vision@Hand is a free software extension to Vision and Vision Pro and does not require a license key.

This release requires new license keys. If you have questions about your license or wish to purchase an upgrade, please contact [Netop Customer Service](#) or your local [Netop Partner](#) for more information.

## Browser-based student

In addition to the Windows-based student module, the Vision teacher module is now also capable of including browser-based student devices in a classroom.

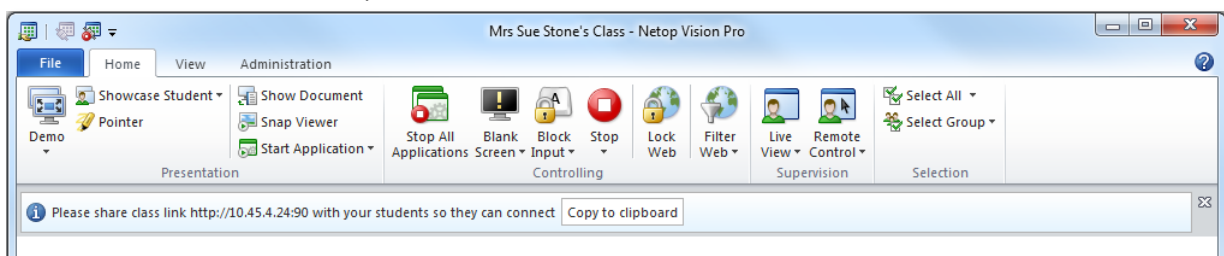
If the classroom has a mix of browser-based student devices and Windows-based student modules, or if the classroom has browser-based student devices only, the classroom must be defined as an **open enrollment classroom**:



The screenshot shows the 'Create Classroom' dialog box with the following fields and options:

- General Information**: Enter information about Classroom.
- Classroom name and optional comments:
  - Name: Mrs Sue Stone's classroom
  - Comments: (empty text box)
- Open Enrollment Classroom status** (highlighted with a red box):
  - Open Enrollment Classroom - students choose which class to join
- Classroom specialization:
  - Make this Classroom my Default Classroom
  - Make this Classroom Global
- Buttons: < Back, Next >, Cancel

When the teacher starts an open enrollment classroom the message bar (the area beneath the Ribbon) displays information about the teacher computer that students must use to connect:



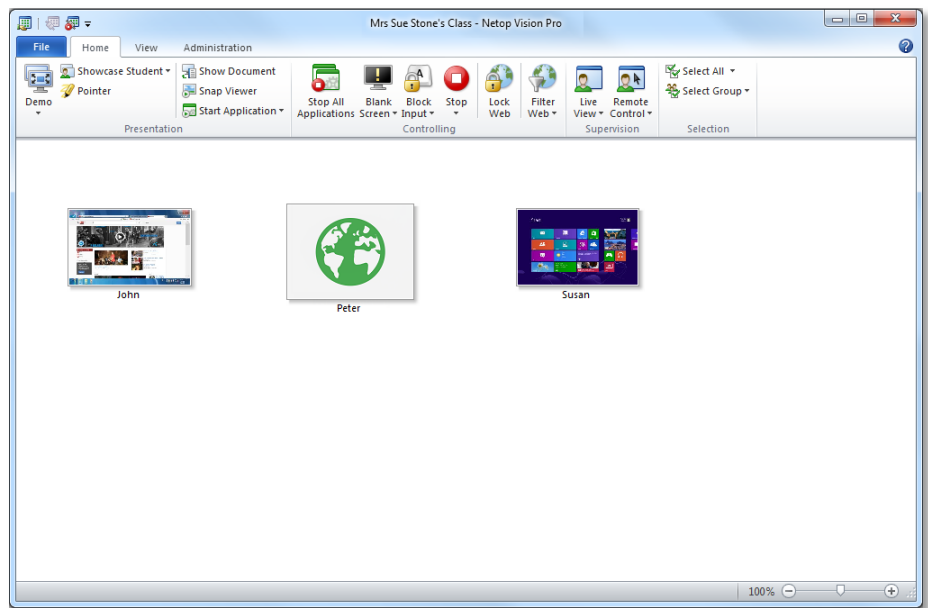
The link to the class consists of the teacher computer's IP address followed by colon and a port number, for example:

`http://10.9.8.7:90`

The default port number is 90 but this can be changed from **Vision Preferences**.

The teacher must send this information to students electronically or share the information in some other way, for example write it on the board.

When students have typed the class link and are ready to receive demo, a static picture for each of the browser-based student devices displays:



The class in the above example has two students connecting from a standard Windows computer (labeled “John” and “Susan”) and one student connecting through a browser (labeled “Peter”).

So you will see standard thumbnails of the screens from the students connecting from a Windows computer with the student module installed and a static picture only of any student connecting through a browser.

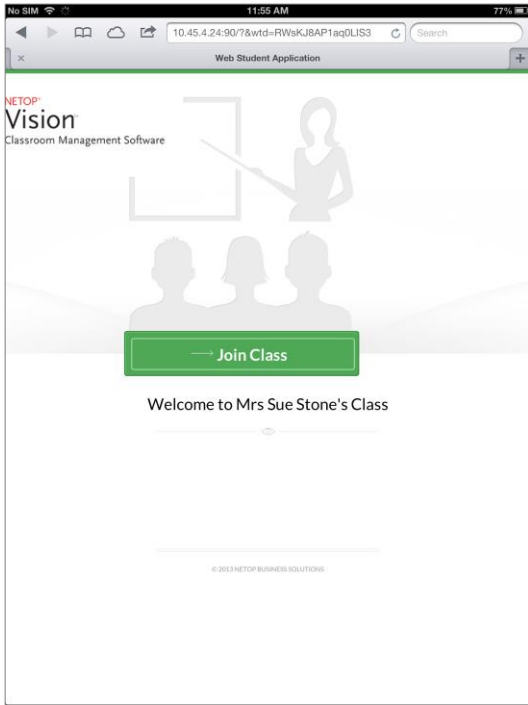
When the student browser-based device has joined the class, the device is ready to receive a demo from the teacher computer.

### Screen-sharing quality

When teachers are sharing their screen with students Vision and Vision Pro now both use hardware acceleration mode (also known as “high-grade screen sharing”). This mode was previously exclusive to Vision Pro but from version 8 both editions will benefit from the optimum screen sharing capabilities. This change was necessary to support browser-based students and regular Windows-based student module will also benefit from the change.

## What students see on their Windows computer, Mac computer, tablet or smart device

When students type the teacher's class link in a browser while the teacher has a class started the student home screen opens:



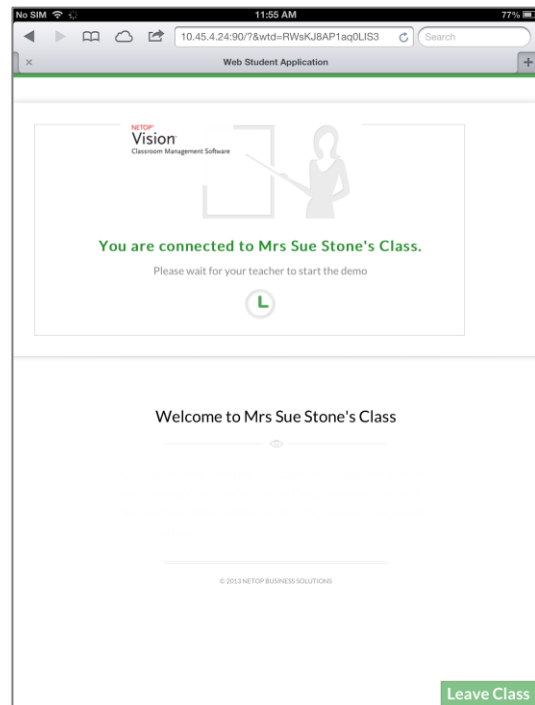
This example is a screenshot from an iPad but could be from almost any other device.

To join the class students tap or click the **Join Class** button.

Tapping or clicking the **Join Class** button opens another screen where students must type their name.

The name will appear beneath the icon that the teacher sees in the class as shown in a previous screenshot from the teacher computer.

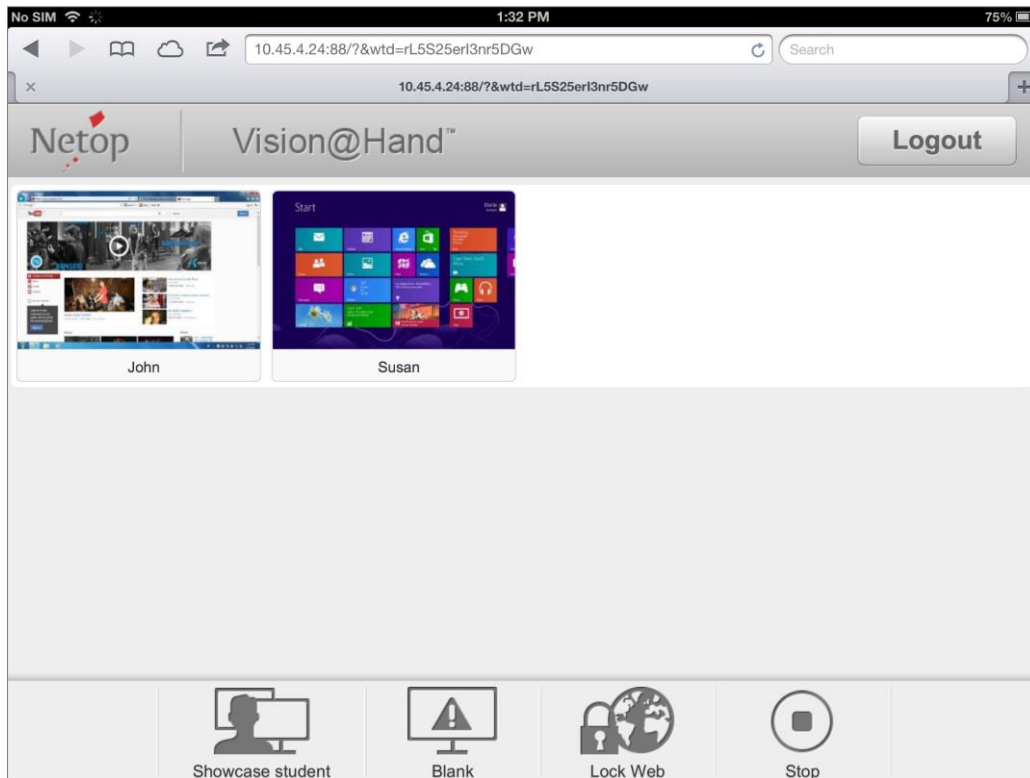
Once students have joined the class they will see a welcome to class screen indicating that they are now ready to receive a demo from the teacher's computer:



## Vision@Hand with thumbnails

In previous version of Vision@Hand teachers had four buttons that could be used to control an active Vision class: **Showcase Student**, **Blank Screen**, **Lock Web** and **Stop**. This meant that Vision@Hand worked like a remote control for the Vision or Vision Pro application: teachers could walk about the classroom with their smartphone and blank student screens from anywhere.

In the new version of Vision@Hand teachers can also see thumbnails of student computer screens:



This makes commands like **Showcase Student** more usable since teachers can see all student screens regardless of where they are in the classroom; teachers can even see the student screens outside of the classroom as long as they have an open connection to their Vision teacher computer.

Vision@Hand is a free software extension to Vision and Vision Pro. [Learn more](#) about Vision@Hand and [download](#) the software to the teacher computer.

## Known issues

### Renaming the active classroom (Windows 8 only)

If the teacher module is running on Windows 8 and you rename the currently active classroom, the teacher module will fail. When you re-start the teacher module the classroom name has been changed and the teacher module works as normal again.

Suggested workaround: disconnect the classroom before you rename.