

NETOP™ Vision6®

Classroom Management Software

The #1 choice of teachers, Netop Vision6 is the most popular brand of classroom management software because it makes teaching with computers easier and more effective. Vision6 gives teachers complete control over classroom computers from an easy-to-use console that shows each student computer screen. Monitor student progress, engage students with on-screen demonstrations, control Web browsing and guide student learning from your computer. There is no easier way to teach with technology.

Engage the entire class

Demonstrate directly on student computers with screen-sharing technology that engages student attention, increases comprehension and improves retention of key concepts.

Guide student learning

Use chat to help any student through a tough problem right from the teacher's desk or take remote control of the student's computer to demonstrate a solution.

Focus student attention

Launch files, applications and Web sites on student computers and block out distractions with App-Control, the Vision6 plug-in that keeps the whole class learning together.

Supervise student computer use

Monitor the whole classroom from the teacher's computer. Keep an eye on Web browsing, identify students who need extra help and improve classroom time on task.

Control classroom Web surfing

Guide or limit Web browsing with Surf-Lock, the Vision6 plug-in that gives teachers instant control over student Internet access. Apply site lists or block Internet access with one click.

Unique push-button controls

Only Vision6 is available with the Vision Teach-Pad, the one-of-a-kind tool that provides push-button control over classroom computers.

BENEFITS

- Improves student grades
- Engages students
- Reduces distractions
- Ensures appropriate use of school computers
- Keeps students on task
- Makes teaching more effective
- Boosts classroom productivity
- Inspires student learning
- Increases retention rates
- Reduces failure rates

"I have been a teacher for 23 years and have not found a tool that has made more of a profound difference in my classroom." - MARK RISENHOOVER, ANDREWS HIGH SCHOOL

FEATURES & BENIFITS

Vision6 classroom management software makes it easy for teachers and trainers to leverage the power of computers for instruction. Vision helps teachers guide student learning and inspire their classes by sharing screens, interacting with students and utilizing Web-based resources to empower student learning.

Engage students with screen-sharing demonstrations

Present lessons directly on student computer screens using Vision's screen-sharing technology. Every student gets a front row seat for instruction, engaging their attention, improving comprehension and increasing retention of key concepts.

Monitor and supervise student computer use

Monitor the whole classroom from the teacher's computer screen. See a thumbnail view of the entire class, or enlarge a specific student screen for more details. Keep an eye on web browsing, identify students who need extra help and improve classroom time on task.

Guide student learning with remote control

Help any student through a tough problem right from the teacher's desk, or take remote control of the student's computer to demonstrate a solution

Make the student the star with virtual teacher mode

Let students show off their good work to classmates with Virtual Teacher mode, which enables any student to demonstrate directly from his or her computer to the whole class.

Focus student attention

When it's time for lectures or important discussions, immediately get the attention of your entire class by blanking student computer screens and locking keyboard and mice to stop inappropriate behavior instantly.

Distribute and collect files or tests

Send files with assignments, quizzes, forms or tests directly to students, and collect them back automatically, saving valuable class time, and helping to ensure a productive class period.

Launch applications and Web pages

Save time, and start the whole class learning together by launching applications or Web pages on every students' computer at the same time.

Help students quickly and discreetly with chat

Chat functionality enables teachers to quickly redirect a student who is on the wrong track or discreetly assist students who need extra attention. Enabling student-initiated chat sessions lets students ask for help privately when needed, and encourages teacher-student interaction.

Conduct instant surveys


Receive feedback from students and gauge their comprehension instantly with real-time surveys. Results are tabulated automatically and appear in a handy pie chart.

Layout your classroom and collect student names

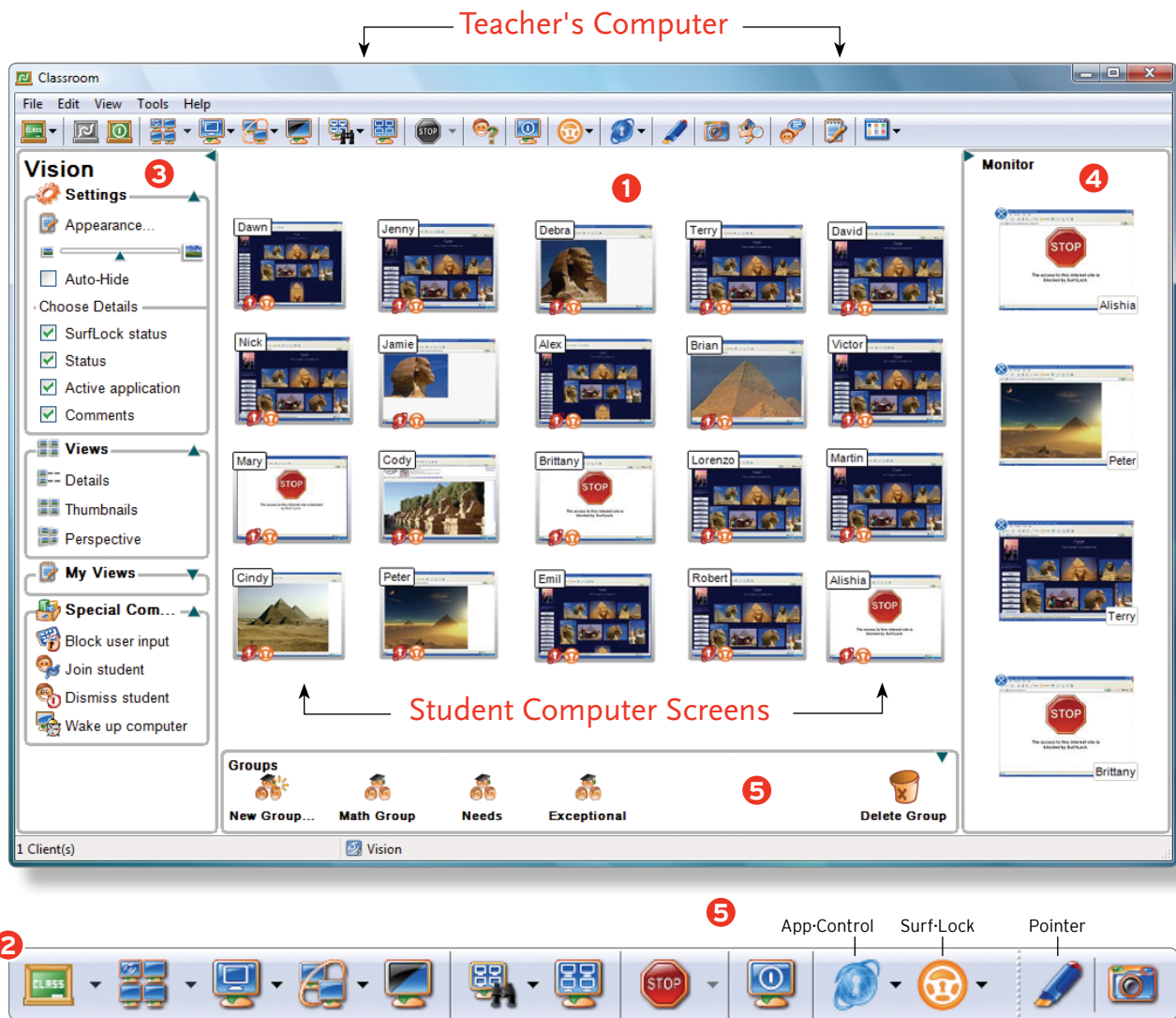
Teaching with computers is easier when you can arrange your view of student computers to match the layout of your classroom. Vision also lets you collect and display the names of your students on the images of their computers.

Wake up or shut down classroom computers

Save time by shutting down or restarting classroom computers remotely from the teacher's station. Vision also supports Wake-on-LAN.



The easiest and
most effective
way to teach with
computers



- 1 Dashboard** Vision's dashboard interface provides teachers a thumbnail snapshot of all of the computers in their classroom while offering intuitive and flexible controls to monitor and manage student computers. Share screens with students, supervise classroom machines, lock screens and remote control student computers. The dashboard gives teachers a way to instantly view computer activity for the entire class, specific work groups, or just a few students at a time.
- 2 Floating Toolbar** Access your favorite Vision features from a simple floating toolbar when the dashboard is not in use. The Vision toolbar floats unobtrusively on the teacher's computer screen and slides out of the way when the current lesson is being displayed. Personalize the toolbar to take advantage of one-button access to powerful Vision features and plug-ins.
- 3 Settings** Vision's new dashboard controls give teachers unprecedented control of classroom computers. Create custom views of the classroom that show students by seating chart, see active programs on each student computer, enter comments for each computer, and view real-time status of every machine in any custom configuration that supports the individual classroom.
- 4 Monitor Pane** The monitor pane is a special area of the dashboard where student computers can be placed for closer observation. Student computer screens can be dragged into this area so teachers can keep an eye on selected students.
- 5 Plug-Ins** Vision6 integrates three powerful plug-in components for easy and effective teaching.

Surf-Lock

Block Internet access for the entire class or individual students, or limit surfing to lesson-related Web sites.

App-Control

Launch applications on student computers and limit access to other programs during class.

Pointer

Annotate presentations and capture student attention with spotlights, highlighters, arrows and more.

ADVANCED FEATURES

Advanced Installer

The Vision6 installer allows customers the ability to use third party remote deployment and imaging solutions to perform mass installations over a network to multiple computers.

Extended Classrooms

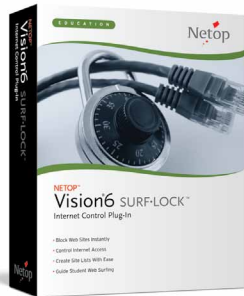
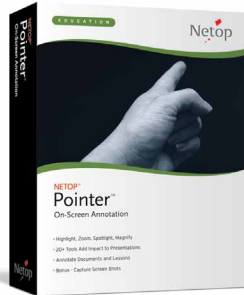
Vision supports communication across subnets and wide area networks. A teacher can instruct one computer lab or many students in multiple classrooms across the school, campus or the entire district.

Mobile Lab and Laptop Support

Vision provides unlimited flexibility and ease of use in determining how teacher computers are connected to student computers in mobile lab and laptop environments. Vision's Open Enrollment enables instructors to advertise a class session over the network to which students can connect.

"Finally I am able to supervise my entire class while helping individual students at the same time. Vision is really great!"

BARBARA WEGER, SCHOOL OF ECONOMICS AND BUSINESS BERN, SWITZERLAND



Plug-Ins

App-Control - Remotely launch and lock applications on all student computers at once. Focus student activity by locking the class into selected applications. Open and share documents with all students in a few mouse clicks or send everyone to the same Web site at once to keep the whole class learning together.

Pointer - Pointer includes over 20 annotation tools that can be used in Vision demos or shown on any screen to highlight presentations. Get your students' attention with arrows, highlighters, magnifiers and spotlights. Hide areas of your screen for quizzes and tests. Take snapshots of your screen or student screens.

Surf-Lock2 - Surf-Lock2 is the easy-to-use plug-in to Vision that allows 'one-click' blocking of the Web or selected access to approved sites for a single student, multiple students, or the entire class. Block surfing or choose allowed sites for the current assignment while locking out the rest of the Web. Surf-Lock is compatible with all major browsers.

Vision Teach-Pad - The Vision Teach-Pad is the one-of-a-kind tool that offers teachers push-button access to the most essential classroom management functions. Demonstrate, blank screens, supervise computers and turn Web surfing on or off with one touch.

NETOP VISION6 SYSTEM REQUIREMENTS

Wired Network

10 Mbps full duplex; 10 Mbps or higher recommended

Operating System

Windows 2000, XP, Vista, or Windows 7. 32 and 64-bit versions are supported. Vision supports classrooms with a combination of operating systems.

Processor

Intel® Pentium® III processor or equivalent; 500MHz or higher

Memory

64 MB RAM; 128 MB and higher recommended

Hard Disk

30 MB of available hard disk space

Video Display

Any 100% VGA compatible graphics adapter supported by Windows



www.netop.com