



NETOP®
Vision™
Classroom Management Software

Modification Notes

Product version:

Vision and Vision Pro version 7.5.1

Build number:

7927

Shipping date:

January 21, 2013

Release theme

To make it easier for new users to get started with Vision, the focus of this release was to simplify the installation process with fewer dialog boxes and better information at each step in the process.

The release also includes a couple of defect resolutions.

As a maintenance release, version 7.5.1 is available for download to customers subscribing to the Netop Advantage Program. If you have questions about your license or wish to purchase an upgrade, please contact [Netop Customer Service](#) or your local [Netop Partner](#) for more information.

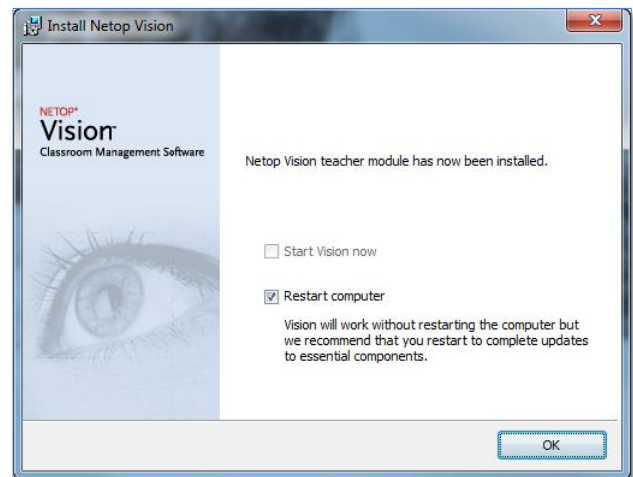
Simplified installation process

The Vision installation program can and must handle many different installation options: teacher module installation both simple and advanced, student module installation both simple and advanced, teacher module MSI both simple and advanced, student module MSI both simple and advanced as well as MSI upgrade.

The previous installation program had one set of dialog boxes for each option, for example the simple teacher module had nine dialog boxes with information or options that the user had to click through and the create teacher MSI also had nine dialog boxes.

In the updated installation program the simple and advanced installation paths share the same dialog boxes with the previous advanced options. The result is that, for example, the total number of teacher module installation dialog boxes and options, simple and advanced combined, have been reduced to six.

Also, new options have been added to the final installation step to enable the user to start Vision immediately or to restart the computer first.



The instructions and explanations in all dialog boxes have also been reviewed and updated with the aim of making it easier to understand each choice.

Issue resolutions

The teacher module would open “Close” dialog box on startup

On a trial installation the “Close Vision” dialog box would sometimes appear when the user clicked OK in the “Welcome to Vision” dialog box. This has now been resolved.

Incomplete message when creating MSI

When using the “Create MSI” installation option the message displayed at the end of the process did not inform the user whether the MSI had been successfully created or not. This has now been resolved.

Known issues

Renaming the active classroom (Windows 8 only)

If the teacher module is running on Windows 8 and you rename the currently active classroom, the teacher module will fail. When you re-start the teacher module the classroom name has been changed and the teacher module works as normal again.

Suggested workaround: disconnect the classroom before you rename.